

SAFETY AND SCHOOL ENVIRONMENT

Non-CSAP Course Offerings

Your School Offers	does	does not
• art.....	<input checked="" type="checkbox"/>	<input type="checkbox"/>
• drama or theater.....	<input checked="" type="checkbox"/>	<input type="checkbox"/>
• music.....	<input checked="" type="checkbox"/>	<input type="checkbox"/>
• physical education.....	<input checked="" type="checkbox"/>	<input type="checkbox"/>
• opportunity for civic or community engagement.....	<input checked="" type="checkbox"/>	<input type="checkbox"/>
• internet safety program.....	<input checked="" type="checkbox"/>	<input type="checkbox"/>
• International Baccalaureate.....	<input type="checkbox"/>	<input checked="" type="checkbox"/>
• extracurricular activities.....	<input checked="" type="checkbox"/>	<input type="checkbox"/>
• athletics.....	<input checked="" type="checkbox"/>	<input type="checkbox"/>
• career and technical education.....	<input checked="" type="checkbox"/>	<input type="checkbox"/>
• advanced placement.....	<input checked="" type="checkbox"/>	<input type="checkbox"/>
• honors.....	<input type="checkbox"/>	<input checked="" type="checkbox"/>

Safety and Discipline

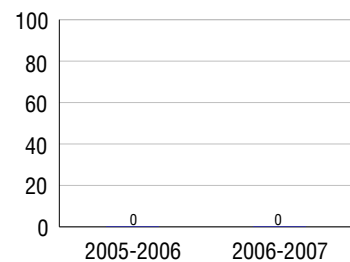
Safe schools are a top priority for parents, teachers, and communities. Your school safety and discipline record for the 2007-2008 school year is:

Type of Incident	Number of Incidents Reported	Percent of Total Incidents
Substance Abuse - Drugs		
Substance Abuse - Alcohol	1	5.9%
Substance Abuse - Tobacco	1	5.9%
Felony Assaults		
Fights	10	58.8%
Possession of Dangerous Weapons		
Other Violations Code of Conduct	5	29.4%

Student Attendance and School Calendar

2007-2008	Your School
Enrollment	149
Average Daily Attendance	133
Student Dropouts	0.0%

Dropout Rate



Student Information Over Time

	2005-2006	2006-2007	2007-2008
Student Enrollment Stability	99.1%	91.0%	94.6%
Students Eligible for Free and Reduced Lunch	40.8 %	35.9 %	34.9 %

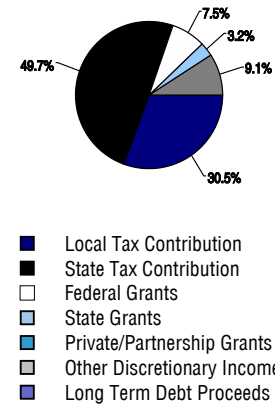
For more information and further details about this report, visit www.state.co.us/schools
 Colorado Department of Education, 201 East Colfax Ave. Denver, CO 80203
Sargent Senior High School
 2750/7664/H
 7090 North Road 2 East . Monte Vista, CO 81144 . 719-852-4025
 10/20/2008

DISTRICT TAXPAYER'S REPORT

Sources of School District Revenue 2007

Local Tax Contribution	\$1,339,822
State Tax Contribution	2,182,062
Federal Grants	330,073
State Grants	141,394
Private/Partnership Grants	0
Other Discretionary Income	400,941
Total District Operating Revenue	\$4,394,292
Long Term Debt Proceeds	0
Total District Revenue	\$4,394,292
Total District Operating Revenue Per Pupil =	\$9,481
Total District Revenue Per Pupil (Including Long Term Debt) =	\$9,481
District Per Pupil Operating Revenue =	\$6,532
State Average Per Pupil Operating Revenue =	\$6,080

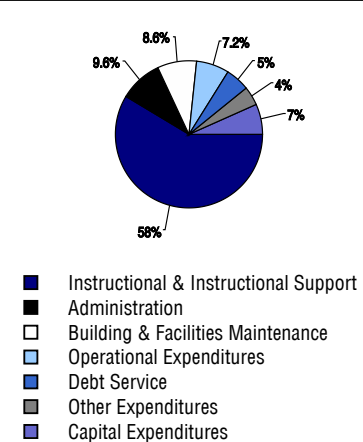
District Source of Funds 2007



District Use of Funds 2007

Instructional & Instructional Support	\$2,407,402
Administration	397,210
Building & Facilities Maintenance	353,995
Operational Expenditures	296,010
Debt Service	220,439
Other Expenditures	163,555
Total District Operating Expenditures	\$3,838,611
Capital Expenditures	278,054
Total District Use of Funds	\$4,116,665

District Use of Funds 2007



District Debt and Capital Construction & Equipment

Total Outstanding Bonded Debt	\$455,000
Average Annual Percentage Interest Rate on Debt	4.01%
Amount Raised from Most Recent Bond	\$1,750,000
Amount Spent on New Buildings During Last 2 Years	\$4,663

Accreditation

Accreditation is Colorado's primary accountability system, incorporating achievement levels, academic growth, achievement gaps, post-secondary readiness, improvement planning, and compliance. The state accredits districts and districts accredit individual schools.

District Accreditation Status for the 2007-2008 school year:

Voter Approved Funding Changes

Your community did /did not hold an election in November 2006

The following items have been approved by voters:

TABOR Override

Bond

Mill Levy Increase

SARGENT SENIOR HIGH SCHOOL



SARGENT RE-33J

<http://sargent.k12.co.us>

School Accountability Report 2007-2008 School Year

School Performance Summary

Overall Academic Performance on State Assessments

High

Academic Growth of Students

Typical

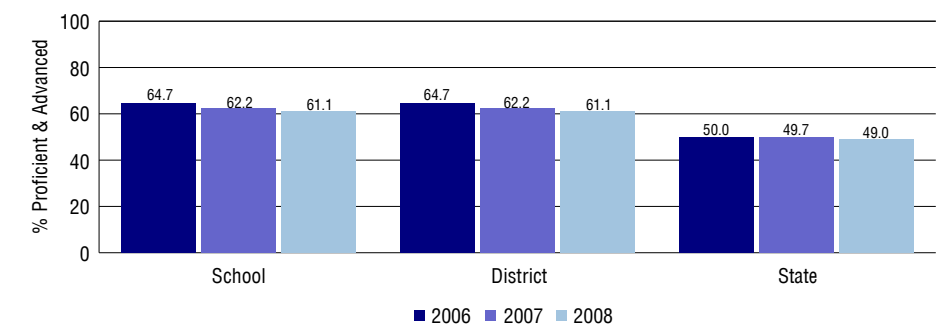
Overall Academic Performance on State Assessments

Each school in the State received a rating of "Excellent", "High", "Average", "Low", or "Unsatisfactory" for student academic performance based on 2007-2008 CSAP and COACT results. The rating is calculated using weighted percentages of each CSAP proficiency level for all content area and grade results for the school, as well as average COACT Reading, Writing, and Math Grade 11 results.

Academic Growth of Students

Each school in the State received a rating of "Low", "Typical", or "High" for student academic growth based on CSAP results. The calculation method is new for 2007-2008. The rating is calculated using student percentile scores matched over two years. More information about the Overall Academic Performance rating and Academic Growth of Students calculations can be found here: http://www.cde.state.co.us/cdeassess/SAR_Info.html.

Percent Proficient and Advanced for High Grades for All Content Areas



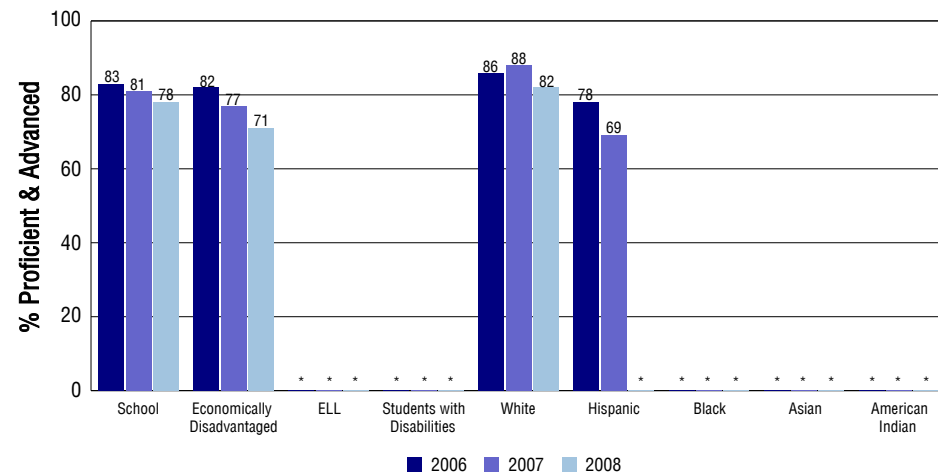
Student Test Scores Used For Calculating Overall Academic Performance

84.5%	Test Scores Counted
1.6%	Test Scores not used due to Language
13.9%	Test Scores not used due to New Student

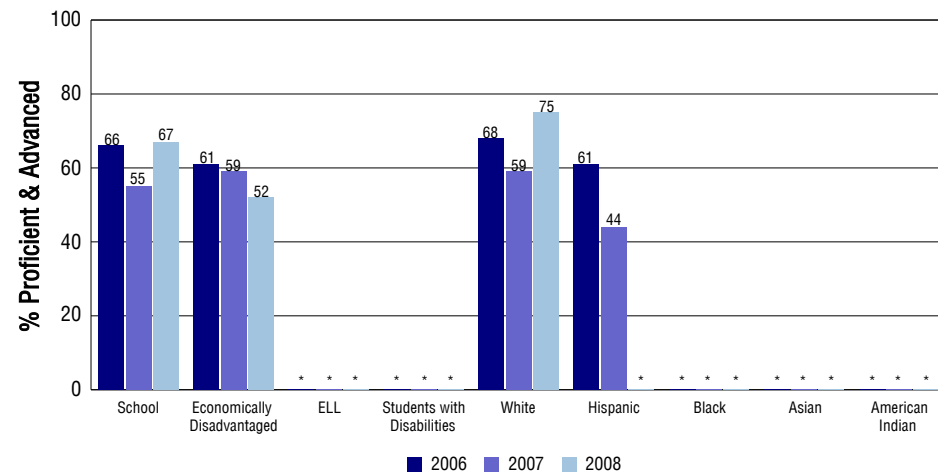
STUDENT PERFORMANCE

These graphs show the percent Proficient and Advanced trends over the past three years for Reading, Writing, and Math. Results are presented for the entire school for all reported grades as well as for different subgroups. Note: * indicates any group with less than 16 student results to be reported.

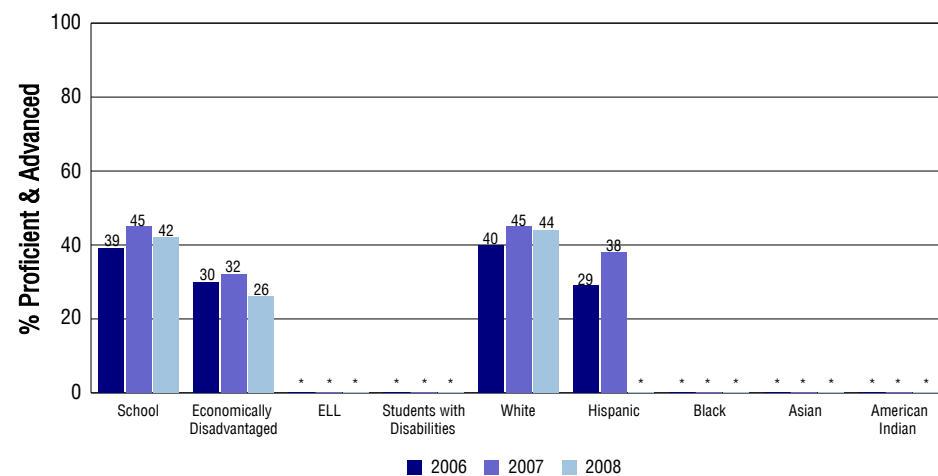
Reading



Writing



Math



SCHOOL INFORMATION

School Pride (as submitted by your district)

- Our goal of 1:1 computing
- The quality of our students in the classroom.
- Our Technology Program
- The percent of students involved in extra curricular activities.

School Goals (as submitted by your district)

To help our students meet all academic qualifications for entering the post secondary institution of their choice.

No Child Left Behind - Adequate Yearly Progress

Did your school make AYP in reading?	Yes	Math?	Yes
Did your school make the graduation rate targets?	Yes		
How many targets does your school have?	10	Met?	10

Based on this school's academic performance, your child may be eligible for one or more of the following; ask your school if your child qualifies for:

Extra academic instruction either before or after-school, or in the summer
Mentoring

For additional information regarding Adequate Yearly Progress please visit
<http://www.cde.state.co.us/FedPrograms/ayp/index.asp>

How Sargent Senior High School Compares To High Schools Within A 75-Mile Radius

School	Program Type	Academic Performance	Academic Growth
Monte Vista On-Line Academy(1)	Online, Alternative	Low	Typical
Monte Vista Senior High School(1)		Average	Typical
Center High School(2)		Low	High
Del Norte High School(3)		Average	Typical
Sangre De Cristo Undivided High School(4)		Average	Typical
Alamosa High School(5)		Average	Typical
Centauri High School(6)		Average	Low
Antonito High School(7)		Low	Typical
Moffat Senior High School(8)		Average	Typical
Sanford Junior/Senior High School(9)		Average	Typical

1 Located in Monte Vista C-8 School District.
2 Located in Center 26 Jt School District.
3 Located in Del Norte C-7 School District.
4 Located in Sangre De Cristo RE-22J School District.
5 Located in Alamosa RE-11J School District.

6 Located in North Conejos RE-1J School District.
7 Located in South Conejos RE-10 School District.
8 Located in Moffat 2 School District.
9 Located in Sanford 6J School District.

ABOUT OUR STAFF

School Employment

Each year, your district reports to the Colorado Department of Education on the number of adults who work in your school, as well as the type of work they do. Last year, your school employed:

	Your School		District	
	Full Time	Part Time	Full Time	Part Time
Teachers	10	4	30	2
Paraprofessionals	0	2	6	4
Administrators	0	1	3	0
Other Professionals	0	0	3	1
School Support	1	1	10	7
School Counselors	0	1	1	0
School Librarians	0	0	0	0
Total Staff	20		66	

Students per Teacher Ratio

	Student Enrollment	Students per Teacher
Grade 9	38	11.9
Grade 10	41	14
Grade 11	34	14.4
Grade 12	36	15.2

Professional Experience of Teachers

	Your School	District
Average years of teaching experience	13	11
Percent of teachers teaching in the subject in which they received their degree	71%	65%
Number of teachers with Masters or Doctoral degrees	4	14
Teachers with 3 years or more of teaching experience	14	27
Teachers with less than 3 years of teaching experience	0	5
Number of professional development days	7	7

Salaries

	Your School	District	State
Average Teacher Salary	\$36,775	\$35,929	\$47,494
Average Administrator Salary	\$52,320	\$67,533	\$80,444

Principal: James Holmes

Number of years as Principal at this school: 2

Number of years as Principal at any school: 2